



Historian Interface Installation Instructions

Help

1 Welcome to Historian Interface Application

WonderWare Historian Interface Application is a supporting application to the AllMax Operations product line, Operator10 Wastewater and Water programs and the Synexus Pretreatment program.

The interface creates link that collect data from the WonderWare historian and store the data in the AllMax Operations programs databases, based on numerous setup options defined in the links. A variety of data can be collected, daily, hourly, 15 minute, up to 1 minute along with summary options to provide Average, Maximum, Minimum, and count options.

The Historian Interface Application can be setup to automatically collect data so user intervention is not required or to collect data manually to meet your specific needs.

Detail information is provided by reviewing additional topics:

Introduction to Historian Interface Application

Review the following topics to learn more!

- [Copyright](#)
- [Installation Overview](#)
- [Initial Setup](#)

Historian Interface Application

Review the following topics to learn more!

- Menu System
- File Menu
- Interface Menu
- Support Menu

Historian Interface Application General Features

Review the following topics to learn more!

- Application Secure Log In
- Main Screen Overview
- Link Setup
- Collecting Data
- Grid Usage

2 Introduction to Historian Interface Application

This section provides basic information related to the installation of WonderWare® Historian Interface by AllMax Software.

WonderWare® is a registered trademark of the Schneider Electric Corporation

2.1 Copyright

Historian Interface Application for WonderWare is © 2015 by AllMax Software, Inc.

AllMax Software, Inc.

PO Box 40
911 S. Main St.
Kenton, OH 43326

Toll-free phone: 800-670-1867

Local phone: 419-673-8863

Fax: 419-673-8864

Sales & Account email address: sales@allmaxsoftware.com

Technical Support email address: go2tech@allmaxsoftware.com

Corporate website: www.allmaxsoftware.com

Go2Tech remote support website: www.allmaxsoftware.com/support/instant-chat.aspx

2.2 Installation Overview

Important Installation Notes

Historian Interface Application Prerequisite Software Requirements:

- Microsoft Visual C++2012 (x86) Redistributable or newer.

Note: Microsoft Visual C++2012 (x86) is included on this installation media and will be installed automatically is needed.

- Microsoft .NET Framework 4.5
- Pervasive PSQL Database engine support

WonderWare Prerequisite Software Requirements:

The following versions are supported based on applying patches and hot fix's as noted.

- **12/16/2014 - Historian 2014 R2 (11.6)**
- **06/03/2014 - Historian 2012 R2 PO2 (11.0) -- apply hot fix L00136281**
- **06/02/2014 - Historian 2014 PO1 (11.5) -- apply hot fix L00136022**
- **11/07/2013 - Historian 2014 (11.5) -- apply PO1 then hot fix**
- **08/13/2013 - Historian 2012 R2 PO1 (11.0) -- apply PO2 then hot fix**

Installation Guide

Pervasive Database Installation:

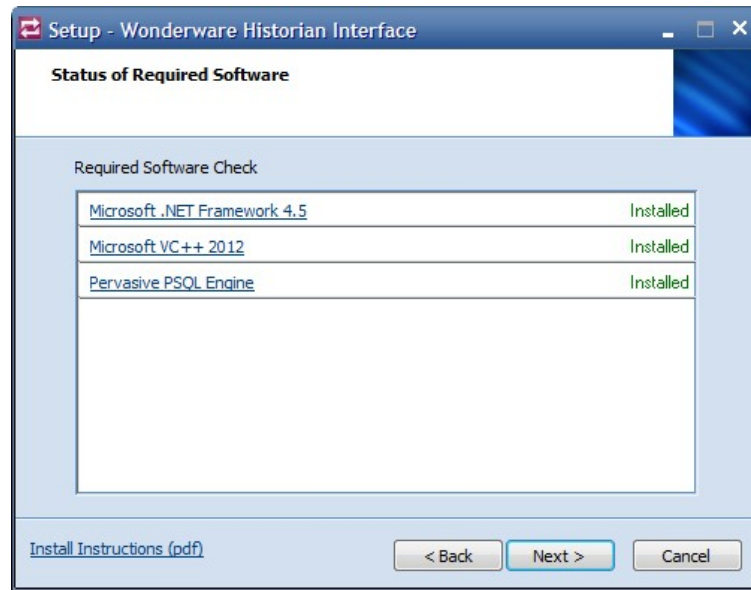
A Pervasive Database engine install is required before running the Historian Interface. This is a separate installation procedure from the Historian Interface application.

Installation Instructions:

1. Run the AllMax Historian Interface installer by running the Setup_WonderWare.Exe file located on the CD, USB drive or from the computer location if downloaded from the web.

Note: Installation instructions can be viewed at any time by clicking the hyperlink located in the lower left hand corner of the windows.

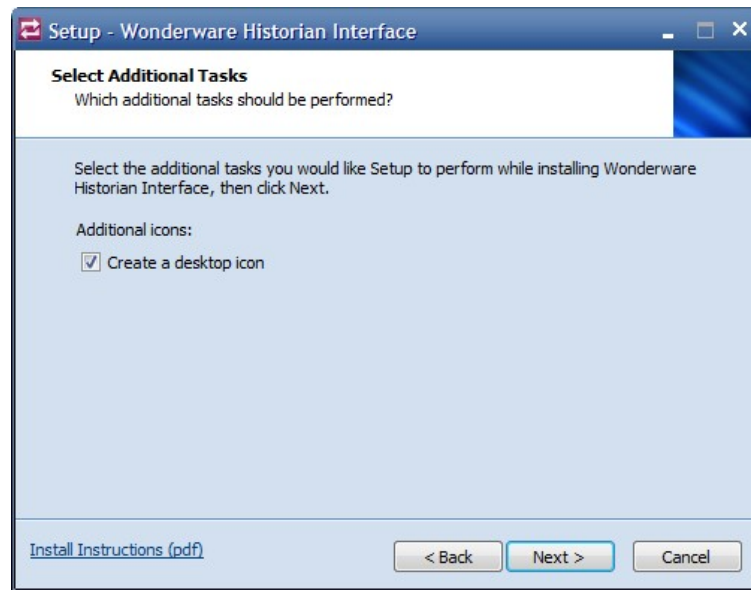
2. Click **Next** on the Welcome screen to continue.
3. The next window will display information about the status of required software before the installation can continue. For more information about the required software, click any of the items. Once all requirements are met, click **Next** to continue.



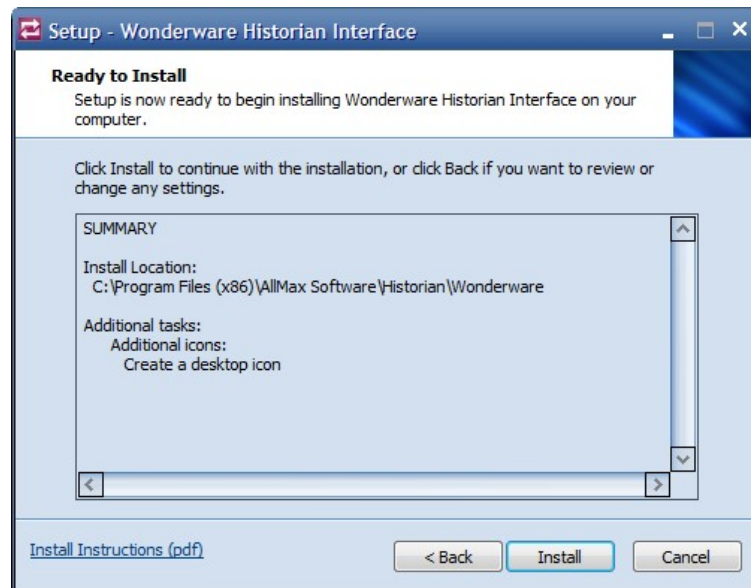
4. Please read the End User License Agreement and select "I accept the agreement" option and click **Next**.



5. On the Additional Tasks window, click the checkbox to create a desktop icon during the installation process, click **Next** to continue.



6. A summary of the options selected will be displayed for review. Click **Install** to begin the installation.



7. During installation, progress will be displayed by a progress bar. When completed, you can select an option to launch the application, then click **Finish**.

**Support Information:**

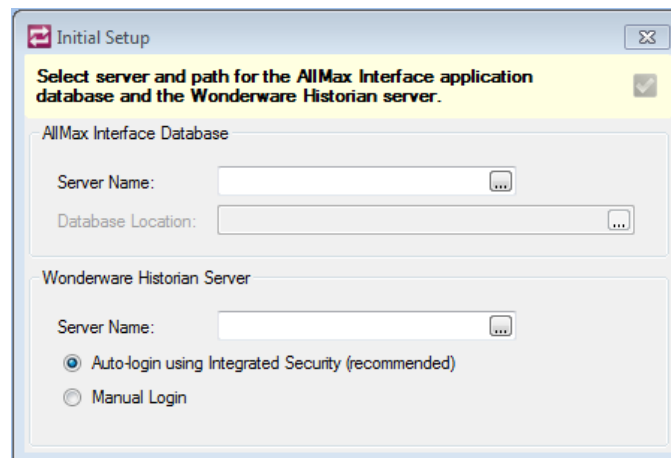
For more information on additional installation options or help with the installation process, please contact AllMax Software technical support at 800-670-1867, go2tech@allmaxsoftware.com or online using our [Go2Tech](#) remote technical support tool.

2.3 Initial Setup

After installation of the application, additional steps will be required on first run to set up database and other items needed to use the WonderWare Historian Interface application.

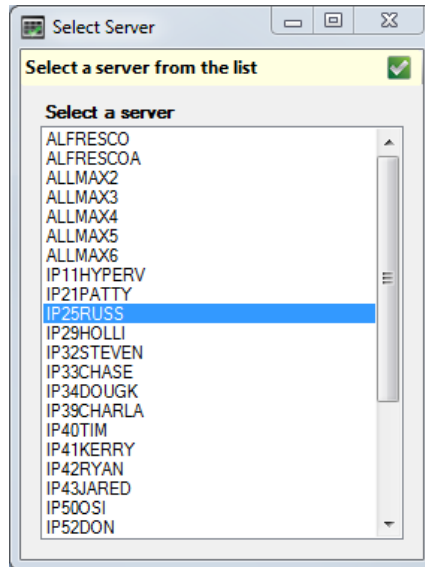
Initial Setup

When the application is started for the first time an initial setup window will be presented.



AllMax Interface Database


The application requires that a database be created to store the links and other application information. Select the server where the database will be located by typing into the field or from a list of available servers by clicking on the [...] button to the right side of the Server Name field.

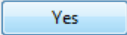


Note: The selected server must have Pervasive Database engine installed in order to create the database.

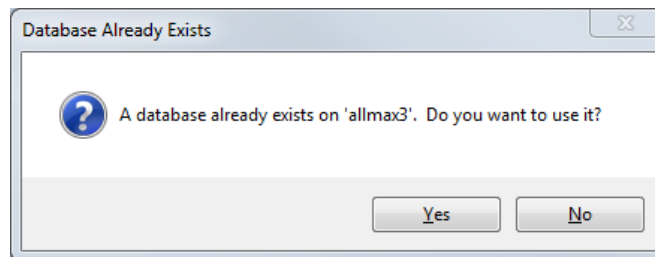
Once a server has been selected, three different results are possible and would be indicated on the form or in a pop up message as outlined in the examples below.

- 1) If the selected server **does not have** Pervasive Database engine installed, an indicator will be presented next to the server name entry field stating that a connection could not be made to the database engine. A different server will need to be selected or an installation of the database engine will need to be installed on the selected machine.
- 2) If the selected server **does have** the Pervasive database engine installed, you will need to enter or select the database file location in order to create the database. This is noted by the indicator next to the Database location entry field. The path can be typed or selected by clicking the [...] button to the right of the entry field. If a local machine was selected as the server, a suggested path will be provided in the 'Browse for folder' window of C:\ProgramData\AllMax\Historian\WonderWare\Data. If a network server was selected, no suggestion or recommendations will be provided.

Once the server and path have been entered for the two options presented above, the  **[OK]** button will be enabled. Click the button to create the database.

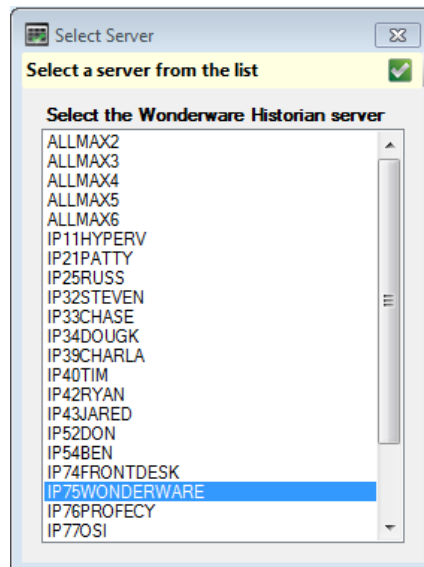
- 3) If the selected server already has the Pervasive database engine and a valid Historian database is present on the server, a pop up message will be presented to use the existing database or return to the server select screen. If  **[Yes]** is selected the login screen will be presented to begin using the application and if

[No] is selected you will be returned to the initial setup screen to select a different server.



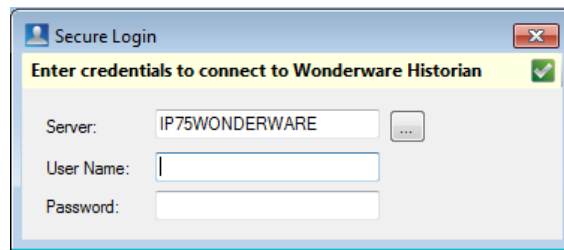
Wonderware Historian Server

The application requires a WonderWare Historian server be selected. A server can be typed into the field or list of available servers can be displayed by clicking on the [...] button to the right side of the Server Name field.

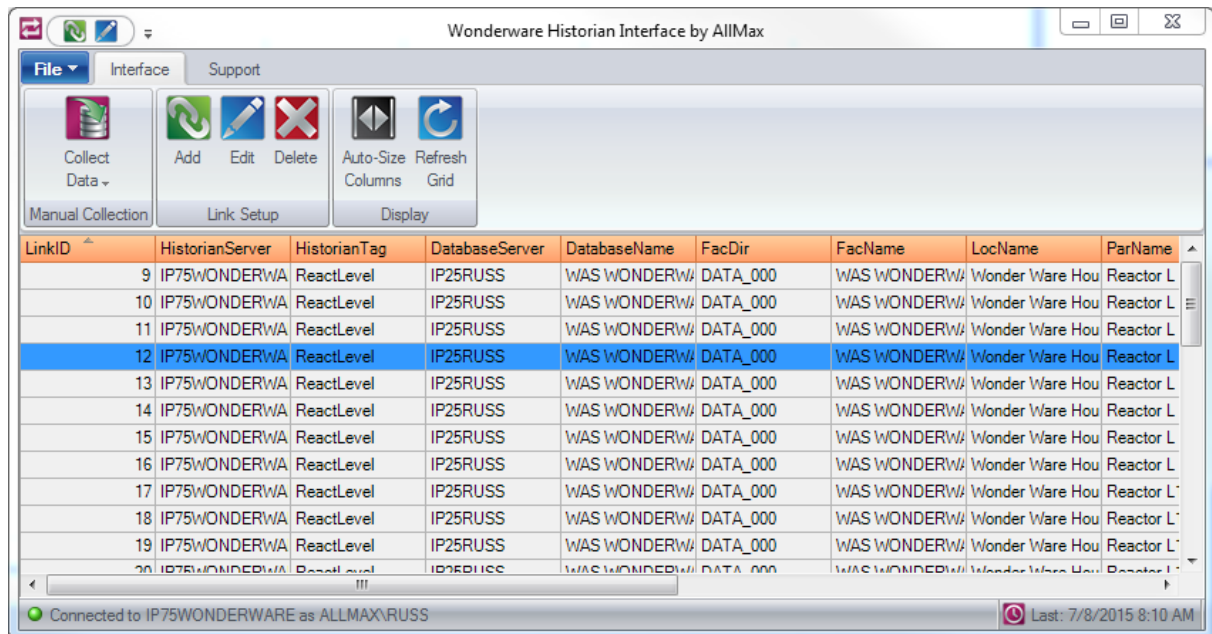


Once a server has been selected, a user name and password need to be provided using one of the options outlined below.

- **Auto-Login using Integrated Security...** - This option will attempt to use the current Windows user to log into the WonderWare Server.
- **Manual Login** - This option requires a user name and password to be manually entered in a pop up window when a login is required.



Once a Valid Login is provided or the current user is validated using Auto Login option the Historian Interface Main Window and menu will be displayed to begin the setup process.



Additional Information

Additional information about the setup and use of the Historian Interface Application can be found using the Help file in the application or by contact AllMax Software.

Sales & Account email address: sales@allmaxsoftware.com

Technical Support email address: go2tech@allmaxsoftware.com

Corporate website: www.allmaxsoftware.com

Go2Tech remote support website: www.allmaxsoftware.com/support/instant-chat.aspx

Toll Free: 800-670-1867

Phone Number: 419-673-8863