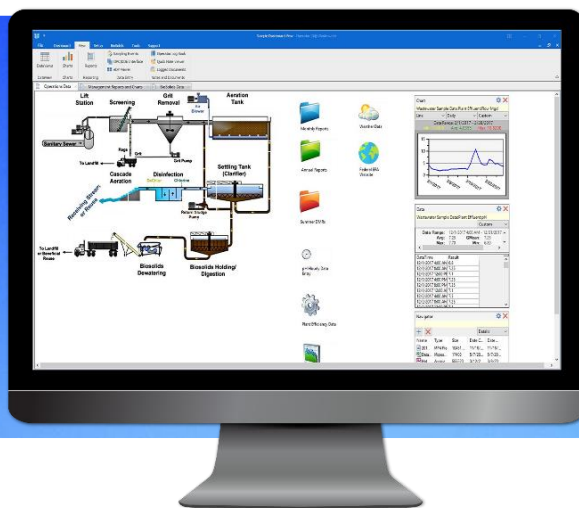


Management, Updated.

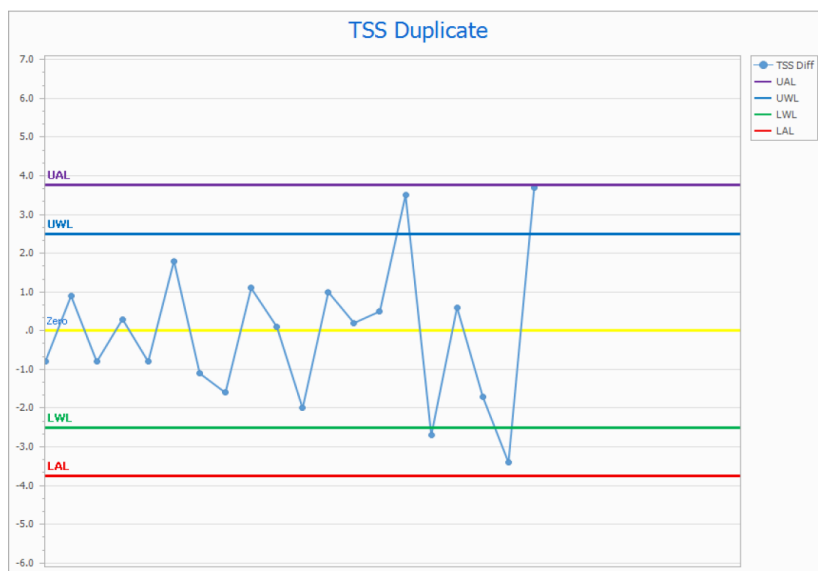
Operator10® Wastewater from AllMax Software, Inc.



AllMax Software, Inc. has updated the Operator10 Wastewater application. Users should be aware of these changes:

Changes by Section

Charting: Added formulas used to create QC/Control charts have been added for easier setup.



Formulas: Corrections to AVG, MAX, and MIN functions

Report Fixes

NJ DMR: Calculations for Fecal type parameters have been resolved for the NJ DMR based on the state rules.



Sales: 800-670-1867 Office: 419-673-8863 Fax: 419-673-8864
 sales@allmaxsoftware.com
 allmaxsoftware.com

