



# Operator10 Wastewater Installation Instructions



# 1 Welcome to Operator10 Wastewater

Operator10 Wastewater® is a full-featured data management application designed to help meet the data collection and reporting needs for the Water and Wastewater Treatment industries. Operator10 Wastewater allows users to manage data that has been manually entered, calculated (via internal formula or user-defined formula) or collected from an alternate data source, such as LIMS, SCADA, data import and/or DataPort.

Unique Location:Parameter data points provide the means by which data is stored and shown throughout the application. Unlimited Location:Parameters can be created to define regulatory reporting data, process control data and other internal data points.

DataViews, custom defined collections of Location:Parameter data, serve as tools to enter and review available data. The Charts section allows users to produce unlimited full-color, 2-dimension and 3-dimension charts capable of displaying raw and summarized data for user-defined multi-day, -month or -year periods. Stock regulatory and custom reports are able to be created and managed for previewing and printing as well as electronic data export.

This help file is designed to help users, new and experienced alike, and provide a valuable reference to the tools and features available in Operator10 Wastewater.

## **Getting Started - General Application Characteristics**

---

Review the following topics to learn more!

- [Getting Started](#)

# 2 Introduction to Operator10 Wastewater

Topics in this section provide basic information related to the general usage of Operator10 Wastewater.

In this section:

- [Getting Started](#)

## 2.1 Getting Started

Topics in this section include:

- [Installation Overview](#)
- [Initial Setup](#)
- Sample Data

### 2.1.1 Installation Overview

#### **Installation Overview**

---

This installation guide includes instructions to create a new installation of Operator10 Wastewater or to update an existing installation.

Before you begin:

- Back up any existing Operator10 databases (for existing installs)

Installation:

- Run Operator10 Installer
  - Installer will check for Microsoft .NET and install if it is not found
  - OPC Core Components Installer will run
  - You will need to read and agree to the EULA
  - Operator10 will install

Initial Setup / First Run:

- Create a License
- Add a Sample or License Database

## Important Installation Notes

---

If you are an existing user of Operator10 Wastewater, it is important that you complete the following steps:

- Prior to installation, perform a backup of all active databases.
- Install version 11.25.0338 (see **Installation Guide** and **Installation Instructions**).
- Update prior version database(s).

## Installation Instructions

---

### Installation Instructions:

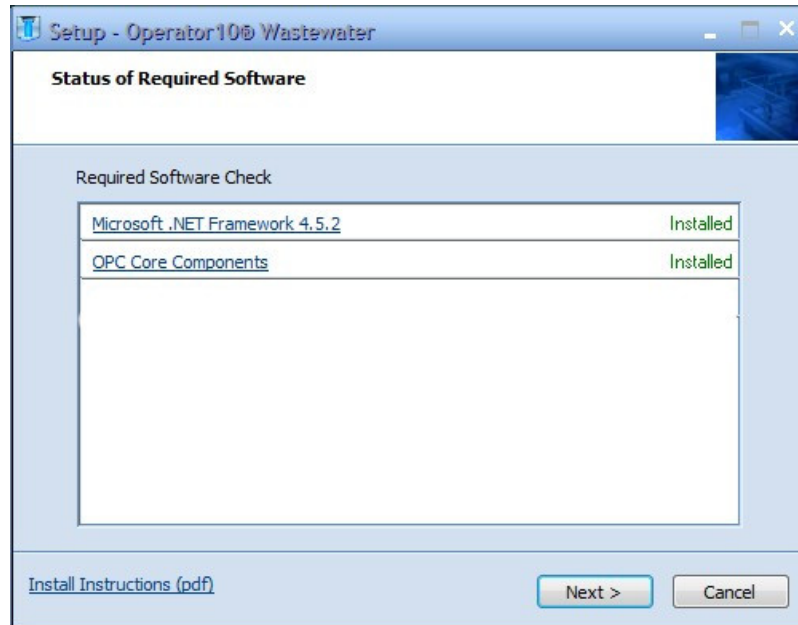
1. Run the Operator10 Wastewater installer by running the setup file located on the CD, USB drive or from the computer location if downloaded from the web.

**Note:** Installation instructions can be viewed at any time by clicking the hyperlink located in the lower left hand corner of the windows.

**Note:** Microsoft .NET 4.5.2 is required and included on this installation media. If necessary, the installation for this will be performed automatically.

**Note:** OPC Core Components Redistributable (x86) 101.2 is required and included on this installation media. If necessary, the installation for this will be performed automatically. These components require Microsoft .NET 1.1 or 2.0 to be installed.

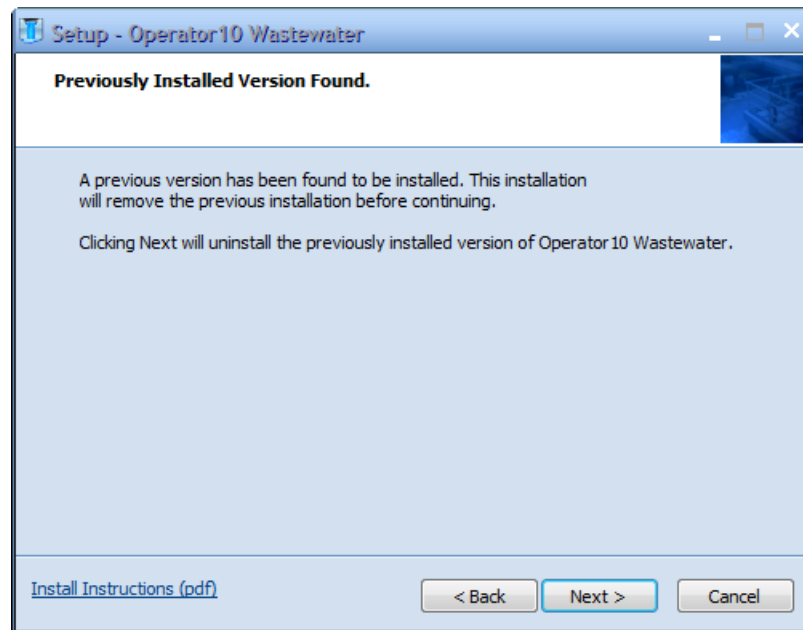
2. Click **Next** on the Welcome screen to continue.
3. The next window will display information about the status of required software before the installation can continue. For more information about the required software, click any of the items. Once all requirements are met, click **Next** to continue.



4. Please read the End User License Agreement and select "I accept the agreement" option and click **Next**.

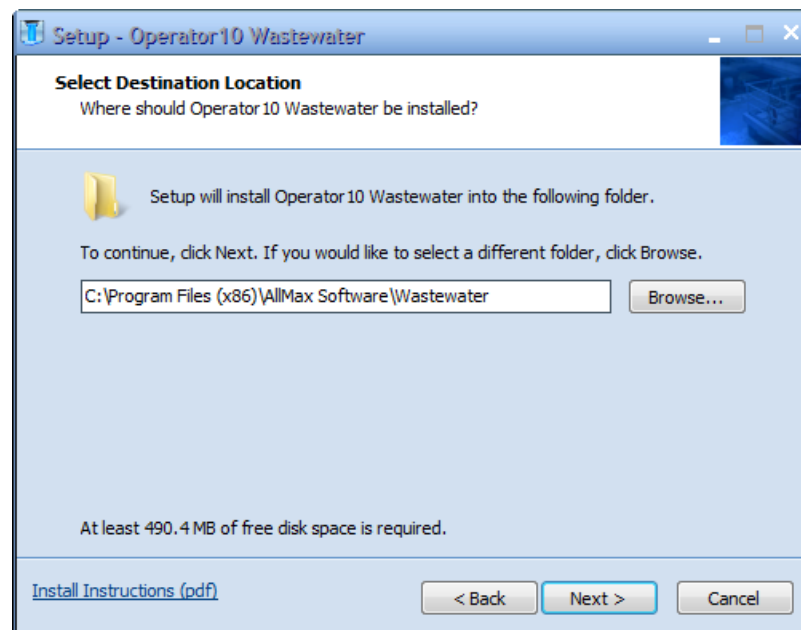


5. If a previous version of Operator10 Wastewater is found, the installation process will remove the previous installation before continuing. Click **Next**.

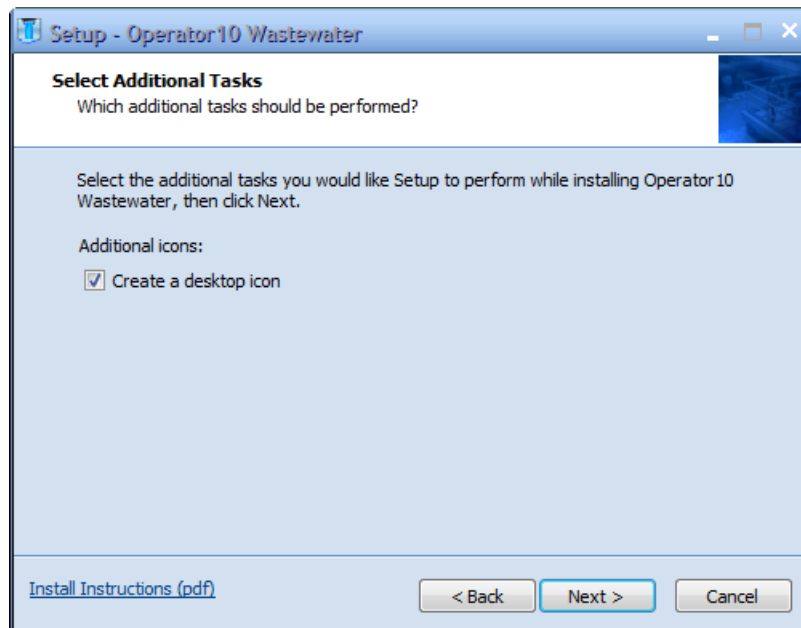


6. Select the Destination Folder where the application will be installed. To change the destination folder, click **Browse...**. Click **Next** to continue.

**NOTE:** Suggested path: C:\Program Files (x86)\AllMax Software\Wastewater\



7. Select any additional tasks and click **Next**.



8. Click **Install** to begin the installation.
9. Upon completion of the installation, click **Finish**.

### Updates:

Follow these instructions to setup, install and apply program updates to existing installations of the AllMax operations programs. Updates are normally provided through a web download, for both the Server and Client installation.

1. Download the file from the AllMax Software Client Login page (<https://www.allmaxsoftware.com/client-login.aspx>) to the machine that you wish to apply the update.
2. Locate the downloaded update file and run by double-clicking.
3. Click **Next** to proceed with the update process or **Cancel** to exit.
4. Upon completion and opening the application for the first time, the database may need to be updated to the latest version. Select the database and click the **Update Database** button. Follow the prompts provided to complete.
5. Program updates will need to be applied to all computers using the AllMax programs.

### Support Information:

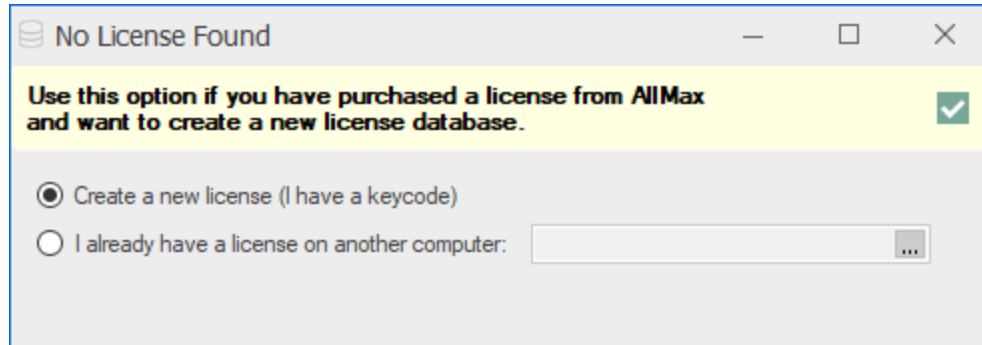
For more information on additional installation options or help with the installation process, please contact AllMax Software technical support at 800-670-1867, [go2tech@allmaxsoftware.com](mailto:go2tech@allmaxsoftware.com), or online using our Go2Tech remote technical support tool.

## 2.1.2 Initial Setup

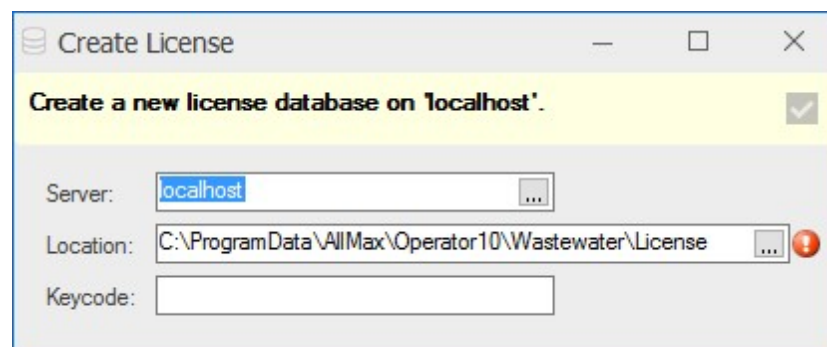
After installation of the application, additional steps will be required on first run to set up or connect to a license and other items needed to use the application.

## Initial Setup

When the application is started for the first time and no license is found locally, an initial setup window will be presented with three options.

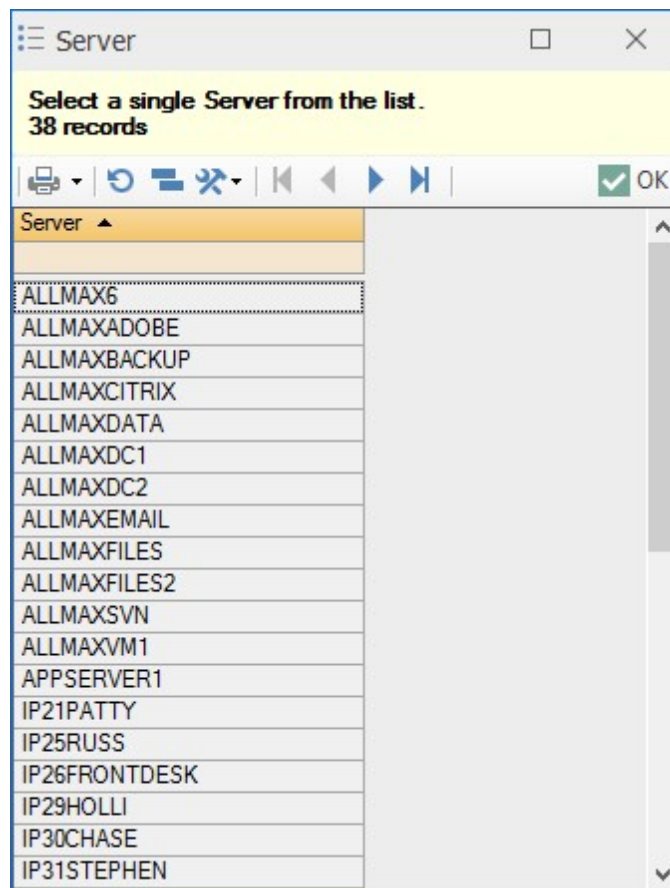


- **Create a new license (I have a keycode)** - Use this option if you have purchased a license from AllMax and want to create a new license database.



- **I already have a license on another computer** - Use this option if this computer will connect to a license database on a different computer/server.

**Note:** If a license has been created on a different computer, select that computer from the list.



### Additional Information

Additional information about the setup and use of the Operator10 Wastewater can be found using the Help file in the application or by contacting AllMax Software.

Sales & Account email address: [sales@allmaxsoftware.com](mailto:sales@allmaxsoftware.com)

Technical Support email address: [go2tech@allmaxsoftware.com](mailto:go2tech@allmaxsoftware.com)

Corporate website: <https://allmaxsoftware.com>

Go2Tech remote support website: <https://www.allmaxsoftware.com/support/go2tech.aspx>

Toll Free: 800-670-1867

Phone Number: 419-673-8863